



Quick Start Guide

Before Installing the Valve:

1. To mount the valve on the actuator, place the O-ring on the valve in the circular indentation around the stem.
2. Use a thin metal object that fits in the valve stem groove to turn the valve and adjust it so that it is aligned with the actuator.
3. Once the valve is aligned and in place, put the clip on the four pins such that the curve is on the inside of all four posts.
4. Make sure the Water Control Panel wiring matches the wiring diagram on page 3.
 - To access the board, remove the four screws on the front of the Water Control Panel, remove the bottom and flip the front panel so that the back is facing up.
5. Plug the Water Control Panel into a standard outlet. **KEEP FINGERS AND OTHER OBJECTS AWAY FROM VALVE TO AVOID INJURY.** You should hear the actuator turn the valve one full cycle.



WARNING: The FOLLOWING STEP WILL DELETE any and all Sensors previously addressed to the Control Panel. All Sensors will need to be re-addressed (See Installing and Testing Sensors section) to the Control Panel.

6. Reset the Water Control Panel to the factory settings pressing the **"MODE"** button and while still depressing this button, also depress the **"OPEN"** button and **HOLD BOTH BUTTONS** until the screen changes.
7. Release first the **"OPEN"** button and then the **"MODE"** button.
8. Press the **"CLOSE"** button to reset to factory default.
9. Test the actuator by removing the rubber stops at both ends of the valve and checking to see the valve position. The indicator lights on the Water Control Panel should show the correct current position of the valve.
10. Change valve position by pressing the unlit **"OPEN"** or **"CLOSE"** button. Press the unlit indicator, either **"OPEN"** or **"CLOSE"**, whichever one does not have a lit light next to it to tell the actuator to perform one-half cycle. **KEEP FINGERS AND OTHER OBJECTS AWAY FROM VALVE TO AVOID INJURY.**
11. Visually verify that the valve has changed position.
12. Repeat steps 10-11 a few times by pressing the alternating **UNLIT** button **"OPEN"** or **"CLOSE"** to test and exercise the valve and actuator.
13. You are now ready to install the valve. Please refer to the "Valve Installation" section of the Instruction Manual for detailed instructions for various methods of installation.

Installing and Testing Sensors

Hardwired Sensor Probes

1. To install hardwired sensor probes (WPSC), first ensure that power is disconnected to the Water Control Panel.
2. Open the case for the Water Control Panel and note the side circuit board with one long terminal strip going the full length.
3. Wire the desired number of sensor probes into the terminal strip matching the leads of the wire with the paired off terminals as marked by the writing on the circuit board.
4. If the wires are in the wrong terminals, the sensor probe will not work.
5. Once you have wired the desired number of sensor probes into the terminal strip, close the case and replace the screws.
6. Plug the Water Control Panel into a standard outlet and wait for it to beep indicating it has finished its boot up sequence.

7. SHORT the sensor probes with a metal object to have the Water Control Panel recognize them. The lights will remain on showing which sensor probes the system recognizes and will flash when something is wrong.
8. Test each sensor probe by shorting it until the Water Control Panel display shows that the probe has shorted and then removing the short and waiting for the display to go back to normal. (5-10 seconds)
9. Test each sensor probe by getting it wet, checking that the valve did close and the alarm did sound.
10. Between each sensor probe wet test, first silence the Water Control Panel **AFTER** the valve has finished closing by pressing any button once, then remove the source of wetness and completely dry off the sensor probe.
11. Press the "OPEN" button once and then wait for the solid "MODE" light to turn off before pressing "OPEN" again to open the valve and continue.
12. Repeat steps 8-11 until all sensor probes have been tested.

Wireless Sensors

1. Before installing the wireless sensors, keep them all near the Water Control Panel. Ensure the sensors have batteries installed or are plugged into a standard outlet nearby for adding into the system. Valve must be open for programming where the display reads "WATERCOP NORMAL".
2. On the Water Control Panel, press the "MODE" button twice waiting a few seconds between each button press until the display reads "DEVICE ADD NEXT →".
3. Press "CLOSE", which is indicated by the "NEXT →" to put the Water Control Panel into add mode. The display should read, "DEVICE #1 ID".
4. Take one sensor and short the probe to add the sensor into the system. For Dual Sensors, only one probe needs to be shorted to add the sensor into the system. For Temperature sensors, short the moisture probe rather than the temperature sensing probe.
5. Once the sensor has been added into the system (which is indicated by the Water Control Panel beeping and reading "***ALERT*** SENSOR #__ SHT1") wait until the display reads "DEVICE STATUS SENSOR # __ OK".
6. Press "MODE" once to go back to the "DEVICE ADD" display. (*If time has passed and the display reads "WATERCOP NORMAL"; go back to step 2.)
7. Repeat steps 3-6 for each sensor to add them all into the system.
8. At the same time, be sure to number them according to the order they are added into the system. You'll need this to record them in the Sensor Location Log (included) when you put them in location.
9. When all of the sensors have been added into the system, you are ready to test them.
10. Test the sensors by individually getting them wet and waiting until the alarm goes off and closes the valve.



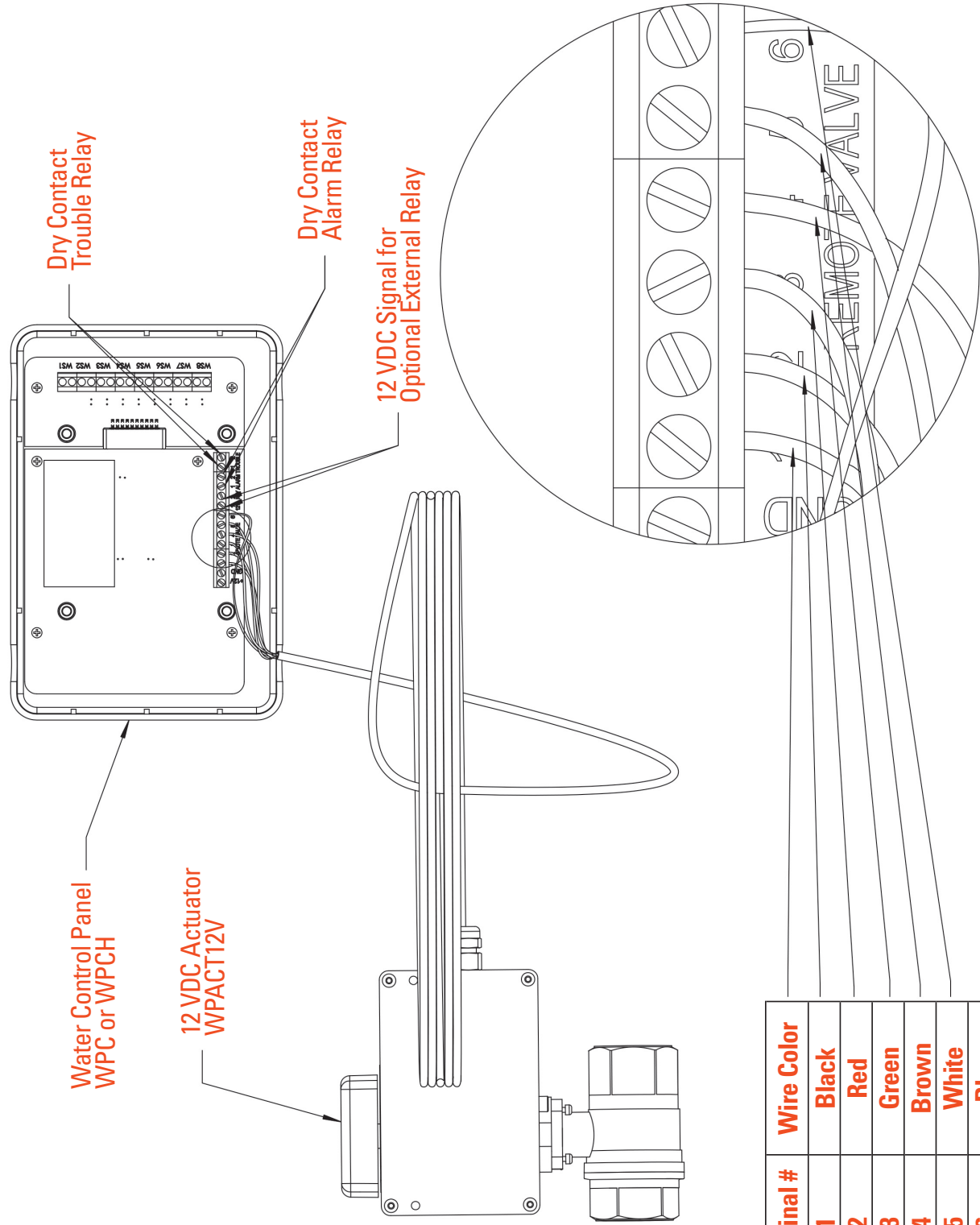
KEEP FINGERS AND OTHER OBJECTS AWAY FROM VALVE TO AVOID INJURY.

11. Silence the Water Control Panel by pressing any button once **AFTER** the valve has finished closing.
12. Remove the source of wetness from the sensor probe and dry it off completely.
13. Wait until the display reads "!ALARM! SENSOR #__ OK".
14. Press the "OPEN" button to open the valve and continue.
15. Repeat steps 10-14 for each sensor probe.
16. Now you can install the wireless sensors following the "Installing the Flood Sensors" and "Placement of Flood Sensors" sections of the Instruction Manual to properly install the sensors.

Optional Features

- **Dry Contact Trouble Relay** (See wiring diagram on page 3 for location.) Dry contact closure for any alerts.
- **Dry Contact Alarm Relay** (See wiring diagram on page 3 for location.) Dry contact closure for any alarm caused by a sensor getting wet and closing the valve.
- 12VDC signal to operate an external relay for water pump, recirculating pump, second valve, etc. (See wiring diagram on page 3 for location.)
- RJ45 Port is for the optional wall switch: RS100.

Master Board Wiring Diagram



Terminal #	Wire Color
1	Black
2	Red
3	Green
4	Brown
5	White
6	Blue





DynaQuip Controls • 10 Harris Industrial Park • St. Clair, MO 63077
Tel. 800-545-3636 • Fax. 636-629-5528 • www.watercop.com

