

Water Security Solutions, LLC
2338 Immokalee Rd. #336
Naples, FL 34110
Phone: (888) 356-5644 / Fax: (888) 356-4997
Email: info@wssus.com
WWW.WSSUS.COM

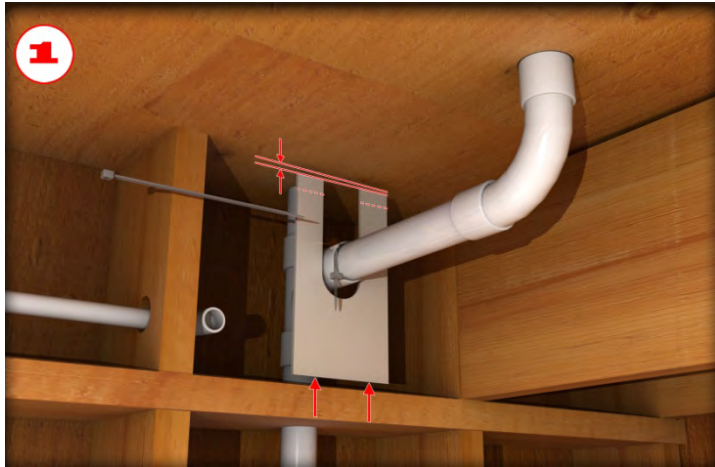


Figure 1:

Fit template (included) to drain pipe.

Allow 3/16" clearance to floor for sealant.

Install "zip tie" (included) diverter to drain pipe as shown.



Figure 2:

Locate drain outlet on container.

Transfer template to container and cut out.

Retain "A" and discard "X".



Figure 3:

Position container for installation.

Add sealant to container rim to seal against floor.

Note "zip tie" installation.

NOTES:

Figure 4:

Install container with fasteners (included).

Note "A" from above installed and sealed in place.

Complete $\frac{3}{4}$ " drain pipe (not included) to code as required.



Figure 5:

Completed container installation shown.



Figure 6:

Install sensor for access and maintainability.

Install battery, turn alarm switch on and add 1-2 ounces of water to collector for testing.

Empty and dry collector, reinstall.



Tools Required for Installation



1. Jig-saw with a fine tooth blade
2. Caulk
3. Power drill with 5/32" drill bit (masonry bit if the ceiling is concrete)
4. Philips screwdriver for connecting the battery and mounting the basin to the ceiling
5. Installer supplied custom cut lengths of 3/4" drain pipe and fittings

Installation note: Requires installer-supplied drainpipe run from Drain Brain basin outlet to Alarm Module with a standard 1/4" drop per 4 feet of horizontal run.

A 20 foot maximum horizontal run is possible using 1/2" drain pipe. You can increase this by reducing the drain pipe diameter to 3/8".

THE DRAIN BRAIN

Water Security Solutions, LLC

2338 Immokalee Rd. #336

Naples, FL 34110

Phone: (888) 356-5644 / fax: (888) 356-4997

Email: info@wssus.com

WWW.WSSUS.COM